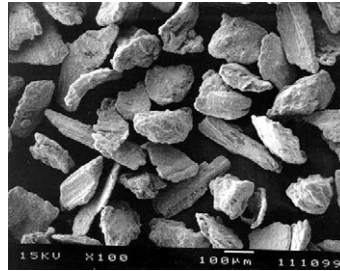


## E-Fill Core Materials

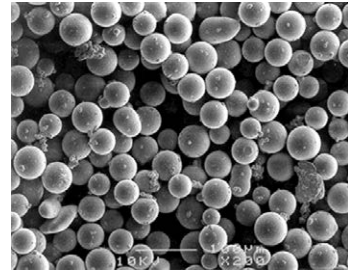
You can have confidence in developing new products with Oerlikon Metco's flexible coating processes, from the initial core selection all the way through to the final coating characteristics. Our flexible coating processes and controls enable a variety of cores to be clad, ensuring the design of your final product will be built to meet your specific end use application and material requirements.

The selection of core material provides you with the confidence to accurately control a variety of factors, including, but not limited to, the shape, particle size distribution, apparent density and cost of the final product.

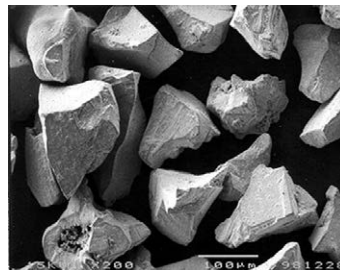
### A Few Examples of the Materials Oerlikon Metco Has Coated Are:



Nickel Coated Graphite



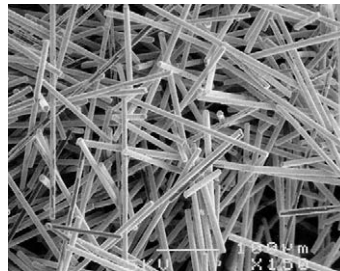
Nickel Coated Glass



Nickel Coated Titanium Carbide



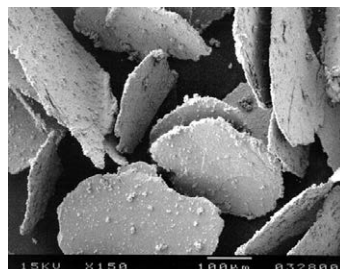
Nickel Coated Copper



Nickel Coated Carbon Fiber



Nickel Coated Aluminum



Nickel Coated Mica