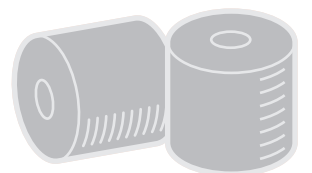


oerlikon
neumag

Screens and Seals

**Perfect partners to maintain and
attend your BCF machines**



Oerlikon Neumag screens and seals care for perfect results

Your advantages:

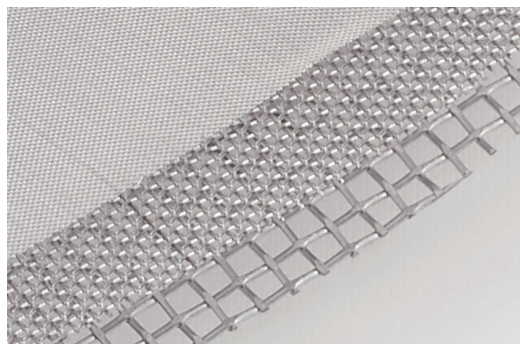
- No risk with high temperatures in the production due to stability up to 290 °C
- Process security due to excellent seals made of high-quality materials
- Perfect fitting based on exact OEM quality
- Screen grain size well-suited for polymers

Finally free from leakage

Being in contact with the hot melt and experiencing high temperatures from the spinning beam, the screens and seals of the spin packs are exposed to considerable strains and, thus, to wear and tear. Oerlikon Neumag's original screens and seals have been customer and product specifically developed, tested and produced for the BCF process by our experts. They reduce the leakage risk considerably.

Ultra high temperature resistance

The temperature of the dowtherm heated spinning beam and also the pressure in the spin pack have an effect on the seals. In the BCF process, they must be dimensionally stable and also uniformly sealing. Oerlikon Neumag's original screens are produced with a high-quality metallically coated frame material which is still perfectly sealing at temperatures of up to 290 °C (PA6, PET).



Process proven filter grain size

Experience the difference of high quality here

Do not take a risk of poor materials or leakages in the process at this point which might be leading to contaminations or a position downtime in the end. Trust in the excellent materials and the precise production process of Oerlikon Neumag's original screens and seals.



Seal ID-No. 8323643

Professionals choose original parts

Our experts will individually specify the well-proven optimal screen grain size and exact measurements for your application. This accuracy will ensure an increased process security in your spinning system.

Example packages

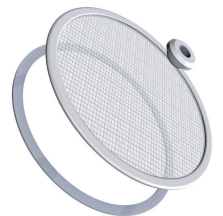
Your Oerlikon Neumag Original Parts team may help you to tie your maintenance package at a special set price.



Package S3 Mono



Package S5 / Sytec Mono



Package S5 Tri

Example	S5 Mono 3 end solution dyed	S5 Tri 3 end raw white	Sytec Mono 1 end solution dyed
1/2 yearly maintenance packages per position needed are:	78 packages for 26 changes (234 pieces)	81 packages for 9 changes (243 pieces)	26 packages for 26 changes (78 pieces)