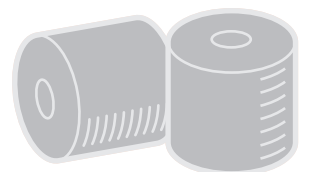
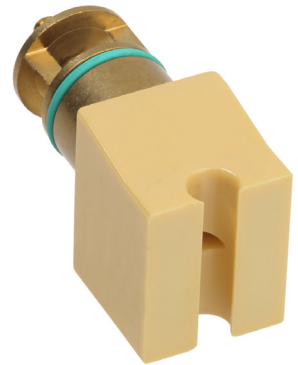


Production range kits for BCF machines

Optimized parts for maximum efficiency



Production range kits (BCF S+/S5, PP, mono)

A perfect setup for your BCF process

Different production ranges require different setups of the BCF machine. In order to get the maximum output, it is necessary to take a close look at the key components influencing the titer range you are producing. This is valid for all BCF machines (NPT, S5, S3 and S+).

Your advantages

- Advice from BCF experts with years of process experience who check the complete machine setup, if required
- One-stop shop for all necessary components
- OEM Quality
- Individually designed process solution

Six key components for the BCF process need to be checked

The following details provide an example for S+ machines when running polypropylene.

1. Extruder capacity

An increase of the produced titer range will lead to an increase of the material flow, thereby necessitating a higher capacity of the extruder.

2. Spinning pump capacity

Increasing the produced titer range causes a higher volume of material flow, requiring a higher capacity of the spinning pumps.

3. Spinneret design

The spinneret design will be calculated according to individual requirements, in order to ensure optimal performance. Please contact us for details.

4. Texturing nozzle

A texturing nozzle in perfect condition and titer optimized size, is one of the key components of a perfect product.

5. Lamella chamber

Closely connected to the texturing nozzle is the lamella chamber, which also needs to be selected according to the titer produced.

6. Tangling nozzle

The last key component kept in mind when changing the process, is the tangling unit. Here the tangle inserts must be suitable for the running titer range.

Please do not hesitate to contact us in case of any questions or if the desired production range, the material or your machine type, is not listed.



Overview for S5, PP*

Titer range (dtex)	Spinneret design**	Texturing nozzle	Lamella chambers	Tangle inserts
1.000-1.600	S5 - LD	1.25 mm	3.6-6.0 mm	5.0 mm
1.600-3.000	S5 - HD	2.00 mm	3.6-6.0 mm	6.0 mm

Overview for S+, PP*

Titer range (dtex)	Spinneret design**	Texturing nozzle	Lamella chambers	Tangle inserts
700-1.200	S+ - LD	1.25 mm	3.0-4.5 mm	4.2 mm
1.200-1.850	S+ - MD/HS	1.48 mm	3.6-6.0 mm	5.0 mm
1.850-2.600	S+ - MD/BCF	1.48 mm	4.0-7.5 mm	6.0 mm
2.600-4.000	S+ - HD	2.00 mm	4.0-7.5 mm	7.0 mm

* Please note that the capacity of the existing spinning pumps as well as the extruder capacity need to be checked when the process is changed.

** Please note that an individual spinneret design may be required.

Oerlikon Neumag

Zweigniederlassung der Oerlikon Textile GmbH & Co. KG
Christianstraße 168-170 · D 24536 Neumünster
www.oerlikon.com/manmade-fibers

Please contact us for a personal quotation:
Phone: +49 4321 305 504 · Fax: +49 4321 305 300
sales.parts@oerlikon.com

Subject to technical modification
and other changes.
ONE 04/14